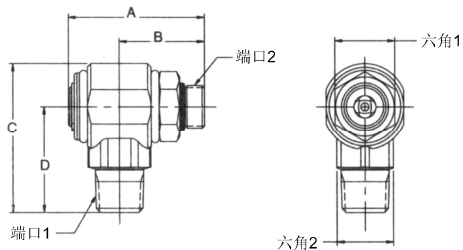


90°  
S 系列

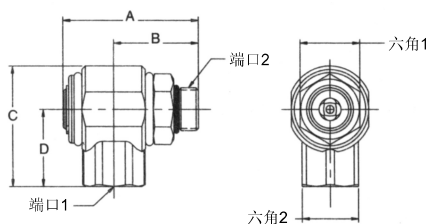
旋转接头

SAE O 形圈直管外螺纹 - 美制锥管外螺纹



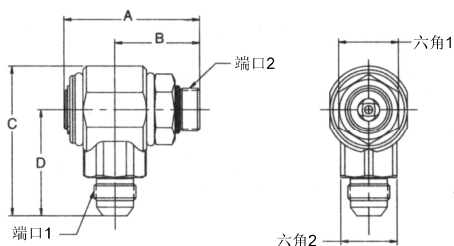
型号	A	B	C	D	六角1	六角2	端口1	端口2
S2501-6-6	2.13" 54.1mm	1.33" 33.8mm	2.19" 55.5mm	1.50" 38.0mm	.88" 22.2mm	.88" 22.2mm	9/16-18UNF-2A	3/8-18 NPTF
S2501-8-8	2.40" 61.0mm	1.50" 38.2mm	2.59" 65.8mm	1.84" 46.7mm	1.06" 27.0mm	1.00" 25.4mm	3/4-16UNF-2A	1/2-14 NPTF
S2501-12-12	3.40" 86.4mm	2.17" 55.2mm	3.00" 76.2mm	2.11" 53.5mm	1.38" 34.9mm	1.38" 34.9mm	1-1/16-12UN-2A	3/4-14 NPTF

SAE O 形圈直管外螺纹 - 美制锥管内螺纹



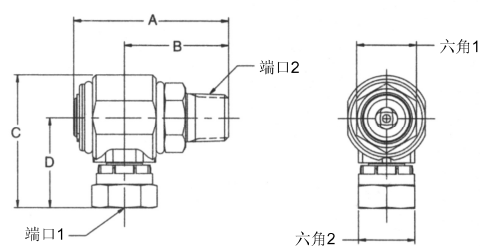
型号	A	B	C	D	六角1	六角2	端口1	端口2
S2502-6-6	2.13" 54.1mm	1.33" 33.8mm	1.78" 45.1mm	1.09" 27.6mm	.88" 22.2mm	.88" 22.2mm	9/16-18UNF-2A	3/8-18 NPTF
S2502-8-8	2.40" 61.0mm	1.50" 38.2mm	2.10" 53.3mm	1.35" 34.3mm	1.06" 27.0mm	1.00" 25.4mm	3/4-16UNF-2A	1/2-14 NPTF
S2502-12-12	3.40" 86.4mm	2.17" 55.2mm	2.39" 60.7mm	1.50" 38.0mm	1.38" 34.9mm	1.38" 34.9mm	1-1/16-12UN-2A	3/4-14 NPTF

SAE O 形圈直管外螺纹 - 37° 扩口式



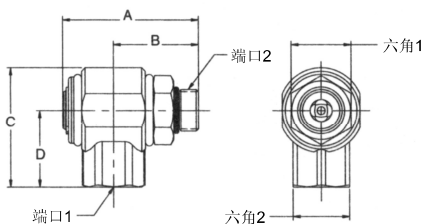
型号	A	B	C	D	六角1	六角2	端口1	端口2
S2503-6-6	2.13" 54.1mm	1.33" 33.8mm	2.19" 55.5mm	1.50" 38.0mm	.88" 22.2mm	.88" 22.2mm	9/16-18UNF-2A	9/16-18UNF-2A
S2503-8-8	2.40" 61.0mm	1.50" 38.2mm	2.59" 65.8mm	1.84" 46.7mm	1.06" 27.0mm	1.00" 25.4mm	3/4-16UNF-2A	3/4-16UNF-2A
S2503-10-10	2.54" 64.5mm	1.64" 41.7mm	2.59" 65.8mm	1.84" 46.7mm	1.06" 27.0mm	1.00" 25.4mm	7/8-14UNF-2A	7/8-14UNF-2A
S2503-12-12	3.40" 86.4mm	2.17" 55.2mm	3.07" 77.9mm	2.17" 55.2mm	1.38" 34.9mm	1.38" 34.9mm	1-1/16-12UN-2A	1-1/16-12UN-2A

SAE O 形圈直管外螺纹 - NPSM 管内螺纹旋转接头



型号	A	B	C	D	六角1	六角2	端口1	端口2
S2507-6-6	2.13" 54.1mm	1.33" 33.8mm	2.07" 52.5mm	1.38" 35.1mm	.88" 22.2mm	.88" 22.2mm	9/16-18UNF-2A	3/8-18 NPSM
S2507-8-8	2.40" 61.0mm	1.50" 38.2mm	2.32" 59.0mm	1.57" 39.9mm	1.06" 27.0mm	1.00" 25.4mm	3/4-16UNF-2A	1/2-14 NPSM
S2507-12-12	3.40" 86.4mm	2.17" 55.2mm	2.74" 69.5mm	1.85" 46.9mm	1.38" 34.9mm	1.25" 31.8mm	1-1/16-12UN-2A	3/4-14 NPSM

SAE O 形圈直管外螺纹 - SAE 内管螺纹



型号	A	B	C	D	六角1	六角2	端口1	端口2
S2510-6-6	2.13" 54.1mm	1.33" 33.8mm	1.78" 45.1mm	1.09" 27.6mm	.88" 22.2mm	.88" 22.2mm	9/16-18UNF-2A	9/16-18UNF-2B
S2510-8-8	2.40" 61.0mm	1.50" 38.2mm	2.10" 53.3mm	1.35" 34.3mm	1.06" 27.0mm	1.00" 25.4mm	3/4-16UNF-2A	3/4-16UNF-2B
S2510-12-12	3.40" 86.4mm	2.17" 55.2mm	2.54" 64.5mm	1.65" 41.9mm	1.38" 34.9mm	1.38" 34.9mm	1-1/16-12UN-2A	1-1/16-12UN-2B