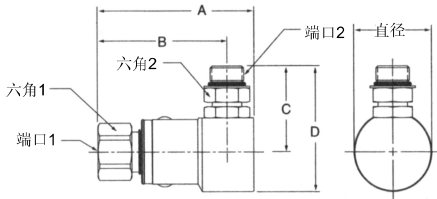


90°

PS 系列

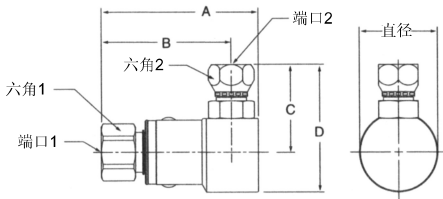
旋转接头

美制锥管内螺纹 - SAE O形圈直管外螺纹



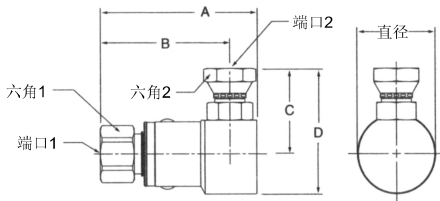
型号	A	B	C	D	直径	六角1	六角2	端口1	端口2
PS490205-4-4	2.87" 72.8mm	2.46" 62.5mm	1.38" 35.0mm	1.98" 50.2mm	1.20" 30.5mm	.75" 19.0mm	.56" 14.3mm	1/4-18 NPTF	7/16-20 UNF-2A
PS690205-6-6	3.19" 80.9mm	2.68" 68.0mm	1.55" 39.4mm	2.20" 55.8mm	1.29" 32.8mm	.88" 22.2mm	.69" 17.5mm	3/8-18 NPTF	9/16-18 UNF-2A
PS890205-8-8	3.46" 87.8mm	2.87" 72.8mm	1.86" 47.2mm	2.72" 69.2mm	1.73" 44.0mm	1.12" 28.6mm	.88" 22.2mm	1/2-14 NPTF	3/4-16 UNF-2A
PS1290205-12-12	3.78" 96.0mm	3.11" 79.0mm	2.40" 61.0mm	3.49" 88.5mm	2.17" 55.2mm	1.38" 35.0mm	1.25" 31.8mm	3/4-14 NPTF	1-1/16-12 UNF-2A
PS1690205-16-16	4.32" 109.8mm	3.46" 87.9mm	2.50" 63.4mm	3.74" 94.9mm	2.48" 63.0mm	1.62" 41.3mm	1.50" 38.1mm	1/11 1/2 NPTF	1-5/16-12 UN-2A

美制锥管内螺纹 - 37° 扩口式内螺纹



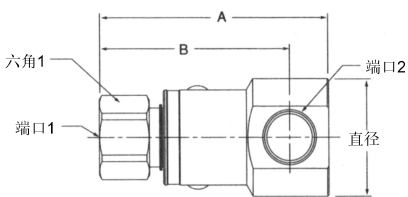
型号	A	B	C	D	直径	六角1	六角2	端口1	端口2
PS490206-4-4	2.87" 72.8mm	2.46" 62.5mm	1.47" 37.3mm	2.07" 52.5mm	1.20" 30.5mm	.75" 19.0mm	.56" 14.3mm	1/4-18 NPTF	7/16-20 UNF-2A
PS690206-6-6	3.19" 80.9mm	2.68" 68.0mm	1.57" 39.9mm	2.22" 56.3mm	1.29" 32.8mm	.88" 22.2mm	.69" 17.5mm	3/8-18 NPTF	9/16-18 UNF-2A
PS890206-8-8	3.46" 87.8mm	2.87" 72.8mm	1.91" 48.4mm	2.77" 70.4mm	1.73" 44.0mm	1.12" 28.6mm	.88" 22.2mm	1/2-14 NPTF	3/4-16 UNF-2A
PS1290206-12-12	3.78" 96.0mm	3.11" 79.0mm	2.34" 59.4mm	3.43" 87.0mm	2.17" 55.2mm	1.38" 35.0mm	1.25" 31.8mm	3/4-14 NPTF	1-1/16-12 UN-2A
PS1690206-16-16	4.32" 109.8mm	3.46" 87.9mm	2.54" 64.6mm	3.79" 96.2mm	2.48" 63.0mm	1.62" 41.3mm	1.50" 38.1mm	1/11 1/2 NPTF	1-5/16-12 UN-2A

美制锥管内螺纹 - NPSM 管内螺纹旋转接头



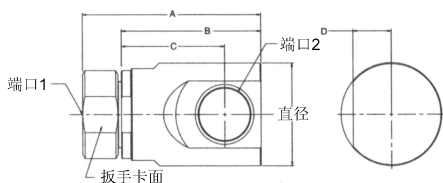
型号	A	B	C	D	直径	六角1	六角2	端口1	端口2
PS490207-4-4	2.87" 72.8mm	2.46" 62.5mm	1.48" 37.5mm	2.08" 52.8mm	1.20" 30.5mm	.75" 19.0mm	.69" 17.4mm	1/4-18 NPTF	1/4-18 NPSM
PS690207-6-6	3.19" 80.9mm	2.68" 68.0mm	1.51" 38.4mm	2.16" 54.8mm	1.29" 32.8mm	.88" 22.2mm	.88" 22.2mm	3/8-18 NPTF	3/8-18 NPSM
PS890207-8-8	3.46" 87.8mm	2.87" 72.8mm	1.86" 47.2mm	2.72" 69.2mm	1.73" 44.0mm	1.12" 28.6mm	1.00" 25.4mm	1/2-14 NPTF	1/2-14 NPSM
PS1290207-12-12	3.78" 96.0mm	3.11" 79.0mm	2.24" 56.9mm	3.33" 84.5mm	2.17" 55.2mm	1.38" 35.0mm	1.25" 31.8mm	3/4-14 NPTF	3/4-14 NPSM
PS1690207-16-16	4.32" 109.8mm	3.46" 87.9mm	2.48" 63.1mm	3.73" 94.6mm	2.48" 63.0mm	1.62" 41.3mm	1.50" 38.1mm	1/11 1/2 NPTF	1-11 1/2 NPSM

美制锥管内螺纹 - SAE 内管螺纹



型号	A	B	直径	六角1	端口1	端口2
PS490210-4-4	2.87" 72.8mm	2.46" 62.5mm	1.20" 30.5mm	.75" 19.0mm	1/4-18 NPTF	7/16-20 UNF-2B
PS690210-6-6	3.19" 80.9mm	2.68" 68.0mm	1.29" 32.8mm	.88" 22.2mm	3/8-18 NPTF	9/16-18 UNF-2B
PS890210-8-8	3.46" 87.8mm	2.87" 72.8mm	1.73" 44.0mm	1.12" 28.6mm	1/2-14 NPTF	3/4-16 UNF-2B
PS1290210-12-12	3.78" 96.0mm	3.11" 79.0mm	2.17" 55.2mm	1.38" 35.0mm	3/4-14 NPTF	1-1/16-12 UN-2B
PS1690210-16-16	4.32" 109.8mm	3.46" 87.9mm	2.48" 63.0mm	1.62" 41.3mm	1/11 1/2 NPTF	1-5/16-12 UN-2B

三件式设计



型号	A	B	C	D	扳手卡面	直径	端口1	端口2
PS2490210-20-20	5.91" 150.2mm	4.63" 117.5mm	3.43" 87.0mm	1.27" 32.3mm	2.63" 66.7mm	3.36" 85.2mm	1 1/4-11 1/2 NPTF	1 5/8-12 UN-2B
PS2490210-24-24	5.91" 150.2mm	4.63" 117.5mm	3.43" 87.0mm	1.27" 32.3mm	2.63" 66.7mm	3.36" 85.2mm	1 1/4-11 1/2 NPTF	1 5/8-12 UN-2B
PS3290210-32-32	6.75" 171.5mm	5.45" 138.4mm	3.93" 99.7mm	1.52" 38.5mm	3.06" 77.6mm	4.19" 106.4mm	2 1-1/2 NPTF	2 -1/2-12 UN-2B

C 旋转接头