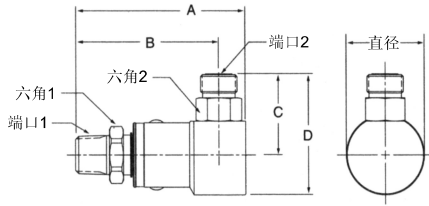


旋转接头

90°

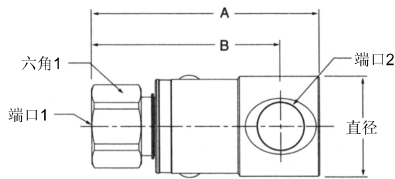
PS 系列

美制锥管外螺纹 - O形圈平面密封



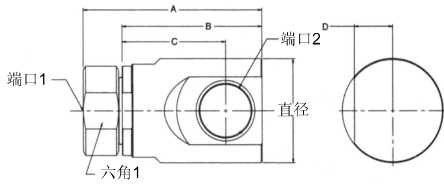
型号	A	B	C	D	直径	六角1	六角2	端口1	端口2
PS4901JM-4-4	3.14" 79.7mm	2.73" 69.4mm	1.29" 32.5mm	1.89" 47.9mm	1.20" 30.5mm	.75" 19.0mm	.56" 14.3mm	1/4-18 NPTF	9/16-20 UNF-2A
PS6901JM-6-6	3.39" 86.1mm	2.88" 73.2mm	1.40" 35.6mm	2.05" 52.0mm	1.29" 32.8mm	.88" 22.2mm	.69" 17.5mm	3/8-18 NPTF	11/16-18 UNF-2A
PS8901JM-8-8	3.76" 95.6mm	3.17" 80.6mm	1.74" 44.1mm	2.60" 66.1mm	1.73" 44.0mm	1.12" 28.6mm	.88" 22.2mm	1/2-14 NPTF	13/16-16 UNF-2A
PS12901JM-12-12	4.10" 104.2mm	3.43" 87.2mm	2.18" 55.4mm	3.27" 83.0mm	2.17" 55.2mm	1.38" 35.0mm	1.25" 31.8mm	3/4-14 NPTF	1-3/16-12 UN-2A
PS16901JM-16-16	4.67" 118.7mm	3.81" 96.7mm	2.34" 59.6mm	3.59" 91.1mm	2.48" 63.0mm	1.62" 41.3mm	1.50" 38.1mm	1/11 NPTF	1/2 1-7/16-12 UN-2A

美制锥管内螺纹 - 美制锥管内螺纹



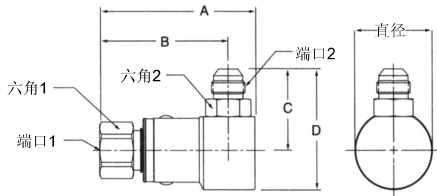
型号	A	B	直径	六角1	端口1	端口2
PS490202-4-4	2.87" 72.8mm	2.46" 62.5mm	1.20" 30.5mm	.75" 19.0mm	1/4-18 NPTF	1/4-18 NPTF
PS690202-6-6	3.19" 80.9mm	2.68" 68.0mm	1.29" 32.8mm	.88" 22.2mm	3/8-18 NPTF	3/8-18 NPTF
PS890202-8-8	3.46" 87.8mm	2.87" 72.8mm	1.49" 37.8mm	1.12" 28.6mm	1/2-14 NPTF	1/2-14 NPTF
PS1290202-12-12	3.78" 96.0mm	3.11" 79.0mm	1.76" 44.6mm	1.38" 35.0mm	3/4-14 NPTF	3/4-14 NPTF
PS1690202-16-16	4.32" 109.8mm	3.46" 87.9mm	2.16" 54.9mm	1.62" 41.3mm	1/11 1/2 NPTF	1/11 1/2 NPTF

三件式设计



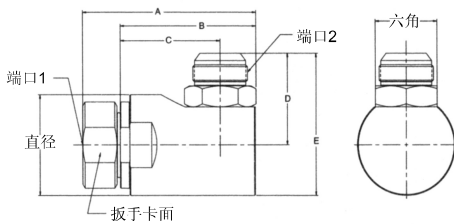
型号	A	B	C	D	扳手卡面	直径	六角1	六角2
PS2490202-20-20	5.91" 150.2mm	4.63" 117.5mm	3.43" 87.0mm	1.27" 32.3mm	2.63" 66.7mm	3.36" 85.2mm	1 1/4-11 1/2 NPTF	1/4-11 1/2 UNF-2A
PS2490202-24-24	5.91" 150.2mm	4.63" 117.5mm	3.43" 87.0mm	1.27" 32.3mm	2.63" 66.7mm	3.36" 85.2mm	1 1/2-11 1/2 NPTF	1/2-11 1/2 UNF-2A
PS2490202-32-32	6.75" 171.5mm	5.45" 138.4mm	3.93" 99.7mm	1.52" 38.5mm	3.06" 77.6mm	4.19" 106.4mm	2 11-1/2 NPTF	2 11-1/2 NPTF

美制锥管内螺纹 - 37° 扩口式



型号	A	B	C	D	直径	六角1	六角2	端口1	端口2
PS490203-4-4	2.87" 72.8mm	2.46" 62.5mm	1.39" 35.2mm	1.99" 50.5mm	1.20" 30.5mm	.75" 19.0mm	.56" 14.3mm	1/4-18 NPTF	7/16-20 UNF-2A
PS690203-6-6	3.19" 80.9mm	2.68" 68.0mm	1.44" 36.6mm	2.09" 53.0mm	1.29" 32.8mm	.88" 22.2mm	.69" 17.5mm	3/8-18 NPTF	9/16-18 UNF-2A
PS890203-8-8	3.46" 87.8mm	2.87" 72.8mm	1.78" 45.1mm	2.64" 67.1mm	1.73" 44.0mm	1.12" 28.6mm	.88" 22.2mm	1/2-14 NPTF	3/4-16 UNF-2A
PS1290203-12-12	3.78" 96.0mm	3.11" 79.0mm	2.24" 56.9mm	3.86" 98.3mm	2.17" 55.2mm	1.38" 35.0mm	1.25" 31.8mm	3/4-14 NPTF	1-1/16-12 UN-2A
PS1690203-16-16	4.32" 109.8mm	3.46" 87.9mm	2.42" 61.3mm	3.66" 92.9mm	2.48" 63.0mm	1.62" 41.3mm	1.50" 38.1mm	1/11 1/2 NPTF	1-5/16-12 UN-2A

三件式设计



型号	A	B	C	D	六角	扳手卡面	直径	端口1	端口2
PS2490202-20-20	5.91" 150.2mm	4.63" 117.5mm	3.43" 87.0mm	2.85" 72.4mm	1.88" 47.6mm	2.63" 66.7mm	3.36" 85.2mm	1 1/4-11 1/2 NPTF	1 5/8-12 UN-2A
PS2490203-24-24	5.94" 150.9mm	4.65" 118.5mm	3.43" 87.0mm	3.05" 77.6mm	2.13" 54.0mm	2.63" 66.7mm	3.36" 85.2mm	1 1/2-11 1/2 NPTF	1 7/8-12 UN-2A
PS3290203-32-32	6.82" 173.1mm	5.51" 140.0mm	3.93" 99.7mm	3.70" 94.0mm	2.75" 69.8mm	3.06" 77.6mm	4.19" 106.4mm	2 11-1/2 NPTF	2 1/2-12 UN-2A

C 旋转接头