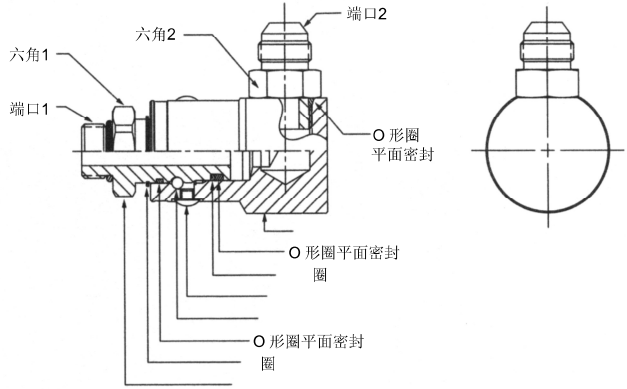
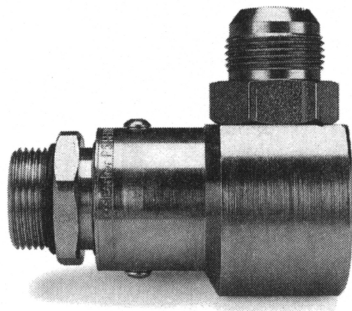


旋转接头

90°

PS 系列

C 旋转接头

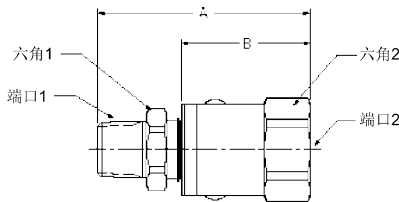


结构材料

- 轴套: 碳钢
- 轴芯: 碳钢
- 表面处理*: 镀锌钝黄(标准型)
- 轴承: 铬
- O形圈平面密封*: 丁腈橡胶(标准型)
- 支撑圈: 聚四氟乙烯

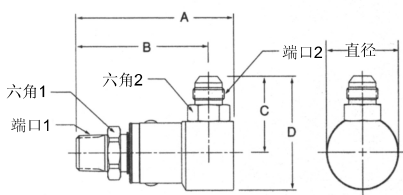
*关于其他表面处理及密封材料, 请参见订购须知。

美制锥管外螺纹-美制锥管内螺纹



型号	A	B	直径	六角1	端口1	端口2
PS490102-4-4	3.14" 79.7mm	2.73" 69.4mm	1.20" 30.5mm	.75" 19.0mm	1/4-18 NPTF	1/4-18 NPTF
PS690102-6-6	3.39" 86.1mm	2.88" 73.2mm	1.29" 32.8mm	.88" 22.2mm	3/8-18 NPTF	3/8-18 NPTF
PS890102-8-8	3.76" 95.6mm	3.17" 80.6mm	1.49" 37.8mm	1.12" 28.6mm	1/2-14 NPTF	1/2-14 NPTF
PS1290102-12-12	4.10" 104.2mm	3.43" 87.2mm	1.76" 44.6mm	1.38" 35.0mm	3/4-14 NPTF	3/4-14 NPTF
PS1690102-16-16	4.67" 118.7mm	3.81" 96.7mm	2.16" 54.9mm	1.62" 41.3mm	1/11 1/2 NPTF	1/11 1/2 NPTF

美制锥管外螺纹-37°扩口式



型号	A	B	C	D	直径	六角1	六角2	端口1	端口2
PS490103-4-4	3.14" 79.7mm	2.73" 69.4mm	1.39" 35.2mm	1.99" 50.5mm	1.20" 30.5mm	.75" 19.0mm	.56" 14.3mm	1/4-18 NPTF	7/16-20 UNF-2A
PS690103-6-6	3.39" 86.1mm	2.88" 73.2mm	1.44" 36.6mm	2.09" 53.0mm	1.29" 32.8mm	.88" 22.2mm	.69" 17.5mm	3/8-18 NPTF	9/16-18 UNF-2A
PS890103-8-8	3.76" 95.6mm	3.17" 80.6mm	1.78" 45.1mm	2.64" 67.1mm	1.73" 44.0mm	1.12" 28.6mm	.88" 22.2mm	1/2-14 NPTF	3/4-16 UNF-2A
PS1290103-12-12	4.10" 104.2mm	3.43" 87.2mm	2.24" 56.9mm	3.86" 85.3mm	2.17" 55.2mm	1.38" 35.0mm	1.25" 31.8mm	3/4-14 NPTF	1-1/16-12 UN-2A
PS1690103-16-16	4.67" 118.7mm	3.81" 96.7mm	2.42" 61.3mm	3.66" 92.9mm	2.48" 63.0mm	1.62" 41.3mm	1.50" 38.1mm	1/11 1/2 NPTF	1-5/16-12 UN-2A