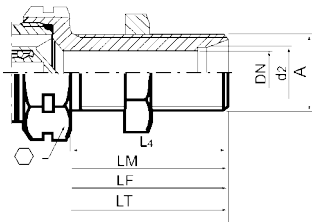


# 液压快换接头

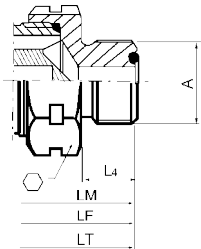
第4组

## 锥角24° - DIN 2353



规格 (英寸)	管外径		A	六角	LM	LF	LT 连接	L4	件号		
	系列	DN							阳接头	阴接头	
用于公制管											
3/8"	L	8	6	M14x1.5	22	58.5	76	117.5	25	4V13E6X2	4V53E6X2
	L	10	8	M16x1.5	22	59.5	77	119.5	26	4V13E6X3	4V53E6X3
	S	10	6	M18x1.5	24	71.5	89	143	27	4V13E7X3	4V53E7X3
	S	12	8	M20x1.5	24	60.5	78	121	27	4V13E7X4	4V53E7X4
1/2"	L	8	6	M14x1.5	27	62.5	83	123.5	26	4V14E6X2	4V54E6X2
	L	10	8	M16x1.5	27	62.5	83	123.5	26	4V14E6X3	4V54E6X3
	L	12	10	M18x1.5	27	74.5	95	147.5	38	4V14E6X4	4V54E6X4
	L	15	12	M22x1.5	27	75	95.5	148.5	38	4V14E6X5	4V54E6X5
	L	18	15	M26x1.5	30	65.5	86	129.5	27	4V14E6X6	4V54E6X6
	S	10	7	M18x1.5	30	65.5	86	129.5	27	4V14E7X3	4V54E7X3
	S	12	8	M20x1.5	27	32.5	87	97.5	27	4V14E7X4	4V54E7X4
	S	14	10	M22x1.5	30	67.5	88	133.5	27	4V14E7X5	4V54E7X5
		16	12	M24x1.5	27	67.5	85	127.5	29	4V14E7X6	4V54E7X6
用于法式标称管											
1/2"		13.25	8	M20x1.5	30	72.5	93	163.5	34	4V14L7X2	4V54L7X2

## O-Lok-SAE J1453 (ISO 8434-3)



规格 (英寸)	DN	A	六角	LM	LF	LT 连接	L4	件号	
								阳接头	阴接头
1/2"	8	13/16-16 UNF	27	49.3	69.8	97.2	12.8	4V14S5X3	4V54S5X3