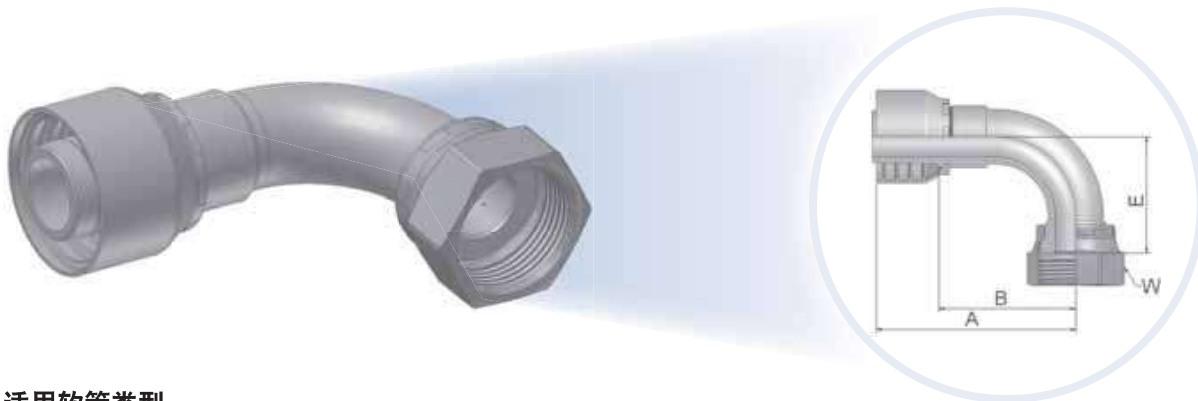



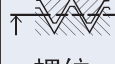


J9 - ORFS内螺纹-旋转螺母-90°弯接头(短弯头)

ISO 12151-1 – SWES, SAE J516 – ORFS 90°



适用软管类型:

 46	441, 461LT, 462, 462ST, 463, 492, 492ST, 692, 692 TWIN
 43	381, 301SN, 302, 481, 421SN, 422, 426, 436, 441, 451TC, 471TC /472TC, 493, 811, 881

XXXX-XX-XX 型号		 软管内径				 螺纹 UNF	A	B	E	W
		DN	Inch	Size	mm		mm	mm	mm	mm
1J946-4-4	1J943-4-4	6	1/4	-4	6,3	9/16x18	48	24	21	17
1J946-6-4	1J943-6-4	6	1/4	-4	6,3	11/16x16	48	24	23	22
1J946-8-4	1J943-8-4	6	1/4	-4	6,3	13/16x16	50	26	29	24
1J946-6-5	1J943-6-5	8	5/16	-5	7,9	11/16x16	53	29	23	22
1J946-4-6	1J943-4-6	10	3/8	-6	9,5	9/16x18	47	24	21	17
1J946-6-6	1J943-6-6	10	3/8	-6	9,5	11/16x16	52	29	23	22
1J946-8-6	1J943-8-6	10	3/8	-6	9,5	13/16x16	53	30	29	24
1J946-6-8	1J943-6-8	12	1/2	-8	12,7	11/16x16	53	29	23	22
1J946-8-8	1J943-8-8	12	1/2	-8	12,7	13/16x16	55	32	29	24
1J946-10-8	1J943-10-8	12	1/2	-8	12,7	1x14	66	43	32	30
1J946-12-8	1J943-12-8	12	1/2	-8	12,7	1-3/16x12	58	34	48	36
1J946-10-10	1J943-10-10	16	5/8	-10	15,9	1x14	66	40	32	30
1J946-12-10	1J943-12-10	16	5/8	-10	15,9	1-3/16x12	71	45	48	36
1J946-10-12	1J943-10-12	20	3/4	-12	19,1	1x14	69	43	32	30
1J946-12-12	1J943-12-12	20	3/4	-12	19,1	1-3/16x12	80	54	48	36
1J946-16-12	1J943-16-12	20	3/4	-12	19,1	1-7/16x12	88	62	56	41
1J946-12-16	1J943-12-16	25	1	-16	25,4	1-3/16-12	88	58	48	36
1J946-16-16	1J943-16-16	25	1	-16	25,4	1-7/16x12	96	66	56	41
1J946-20-16	1J943-20-16	25	1	-16	25,4	1-11/16x12	104	74	64	50
1J946-20-20		32	1-1/4	-20	31,8	1-11/16x12	124	86	64	50
	1J943-20-20	32	1-1/4	-20	31,8	1-11/16x12	130	83	64	50
	1J943-24-24	40	1-1/2	-24	38,1	2x12	140	102	82	60

材料: 碳钢, 镀锌