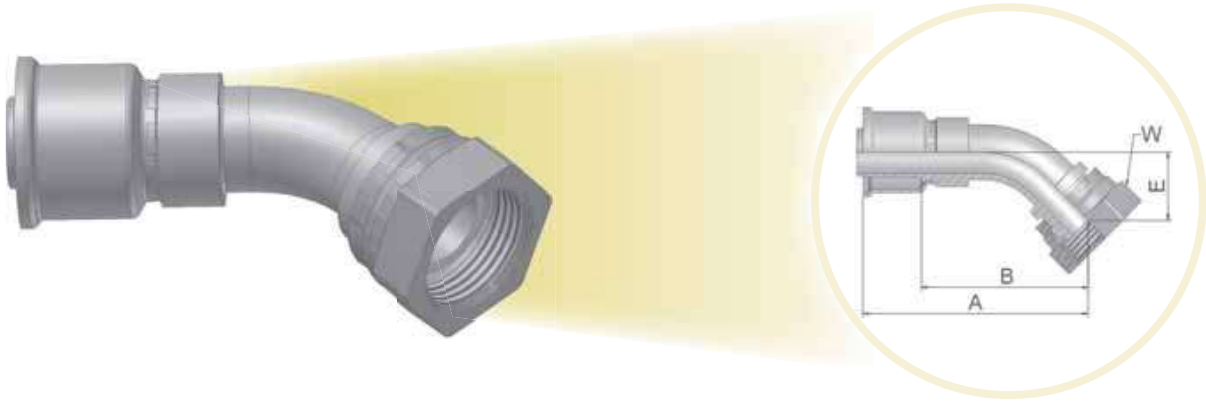


## B1 - BSP内直管螺纹-旋转螺母-45°弯接头(60°锥)

BS 5200-D, DKR 45°



适用软管类型:



201 / 206 / 213 / 221FR / 285 / 293

B

XXXX-XX-XX 型号 26	软管内径			螺纹 BSP	A	B	E	W
	Inch	Size	mm					
1B126-4-4	3/16	-4	5,0	1/4x19	44	24	26	19
1B126-6-6	5/16	-6	8,0	3/8x19	55	36	16	22
1B126-8-8	13/32	-8	10,0	1/2x14	62	42	16	27
1B126-10-10	1/2	-10	12,5	5/8x14	67	44	20	30
1B126-12-12	5/8	-12	16,0	3/4x14	70	47	18	32
1B126-16-16	7/8	-16	22,0	1x11	103	76	31	41
1B126-20-20	1-1/8	-20	29,0	1-1/4x11	125	98	35	50

材料: 碳钢, 镀锌